

LINX SL301

30W Scribing laser system



Do you have a high maintenance coding system that causes downtime and needs a lot of attention? Then maybe it's time for a change.

The LINX SL301 is a mid-powered 30W laser coder specially designed for ease of installation, use and maintenance. It can code a wide range of products at speeds of up to 984 ft/min in a variety of manufacturing industries.

The LINX SL301 has been developed to be:

- Simple to install
- Simple to operate
- Simple to maintain

What does this mean for you?

- Lower installation costs
- Less downtime and hassle
- Simple setup and everyday operation
- Reliable coding around the clock without the need for manual intervention
- High quality codes even at higher line speeds

Simple to install

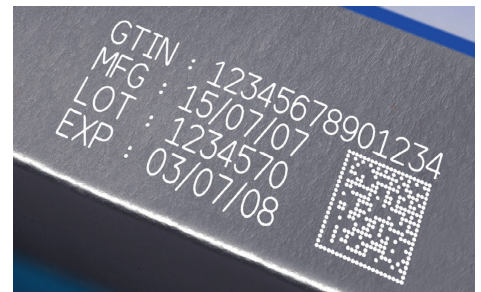
- Broad range of head and lens configurations – for variable marking distances
- Short installation times
- Different head orientations – for simple integration into challenging production line set-ups

Simple to operate

- Operation via a remote hand-held control
- Code setups and changes at the touch of a button
- Intuitive user interface – no classroom training needed
- LINXDraw PC software enables more complex code creation (i.e. graphics & 2D codes)

Simple to maintain

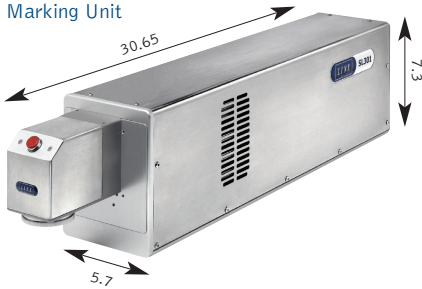
- IP54/65 rating – Maximum reliability and uptime in challenging environments
- Long-life laser tube with large gas volume
- 24/7 operation without the need for manual intervention



LINX SL301

Dimensions (inches)

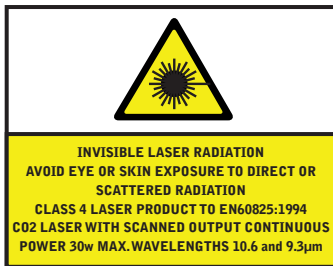
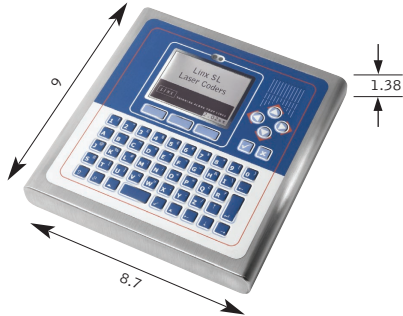
Marking Unit



Supply Unit



Hand-held Control Unit (HCU)



www.diagraph.com



Performance

Line speed*	984 ft/min
Standard model SL301	SHC60 Marking head, 2.5" lens
Spot size/Mark field/Marking distance	0.015"/1.73x1.73"/2.63"
Other lens and head options (range)	
• Spot size	0.004–0.065"
• Mark field	1.14x1.14–11.62x16.04"
• Marking distance	2.64–15.17"
No. lines of text	Only limited by character size and mark field size
Character height	Up to mark field size
Print rotation	0-360°

General features

Set-up/user interface	Hand-held Control Unit (HCU)
PC software interface	LINXDraw (Windows XP, 2000)
Password protection	3 levels - Operator, Line supervisor, Service engineer
Memory storage (MMC)	256MB
Fixed line speed coding	✓
Variable line speed coding	✓
High-speed column printing	✓
System diagnostic and error log function	✓

Printing and programming facilities

Fonts	9 optimized vector fonts, can import OTF, TTF, PFA, PFB and SVG fonts
Last code used function	✓
Graphics editing and import	✓
Multiple font selection	Yes – character by character
Barcodes	2-of-5, Interleaved 2-of-5, Code 39, EAN 13, UPC, Code 128, EAN 128, UPC_A, RSS 14TR, RSS 14ST, RSSLIM, RSSEXP
Data matrix 2D codes	ECC000, ECC050, ECC080, ECC100, ECC140, ECC200, ECC PLAIN
Languages	English, German, Dutch, Spanish, Portuguese, French, Italian

Physical characteristics

Material	Stainless steel covers, anodized aluminium chassis
Weight: Marking unit/supply unit	47.2 lbs/26.5 lbs
Conduit length	9.8 ft (standard), 16.9 ft (optional)
Head options	SHC60 (standard spot), SHC100 (small spot), SHC120 (micro spot)
Head mounting kits	BEU (Beam Extension Unit), BTU (Beam Turning Unit), straight shooter
Cooling IP54 standard	Air cooled
Cooling IP65 kit option	External air source
Supply voltage/frequency	Auto selection range 100 to 240V
Maximum power consumption	0.7kVA

Laser details

Laser type	Sealed RF excited CO ₂
Max. laser output power at lens	30W
Life (average)	40,000 hours
Wave-length	10.6µm or 9.3µm
Variable frequency range	3 to 25Khz
Laser tube warranty	2 years

Environmental details

Ambient operating temperature	41 to 104°F (70% duty cycle at maximum temperature)
Automatic overheat detection	Yes
Storage temperature	14 to 158°F
Humidity range	10-90% (relative, non condensing)

Interfacing

Interface ports	Sensor, Encoder, Ethernet, User I/O's
Optional interfaces	Serial port
PC interface	Via Ethernet port

Regulatory approvals

CE mark	✓
---------	---

*1 line of 10 characters – Blue Card

Key ✓ standard



For more information, contact Diagraph, An ITW Company, 1 Missouri Research Park Drive, St. Charles, MO 63304
 Phone: 800-722-1125 Fax: 636-300-2004 Email: info@diagraph.com Website: www.diagraph.com
 Equipment Sales: 800-722-1125 Service, Parts & Inks: 800-526-2531